

COMMERCIAL AFFIDAVIT OF TRUTH
Commercial Notice Court of Conscience
Qui Tam Non Obstante Veredicto Scire Facias

INSTR # 5385942
OR BK 03600 PG 4321

TO PUBLIC SERVANTS, (Officers/employees/debtors
of the UNITED STATES for the united states of
America) as listed herein and throughout, ss.

RECORDED 03/18/02 09:10 AM
CHARLIE GREEN CLERK OF COURT
LEE COUNTY
RECORDING FEE 19.50
DEPUTY CLERK J Miller

GAIL A. NORTON, ET AL. / THOMAS K. KAHN, THE CLERK OF
U.S.COURT OF APPEALS FOR THE 11TH CIRCUIT-----, ET AL.

R.S.A.#439141362-Adv.01 799-EF283958637US, ET AL.
ACCOUNT # 70000600002590079841 / 03102990000562188248, ET AL.

FOR YOUR/THEIR COMPLIANCE AND
MANDATORY RESPONSE FORTHWITH, ET AL.

gy

D.C.

2003 JUL 28 AM 11:22

FILED LEE CO. FLORIDA
CLERK OF COURTS

SUMMARY JUDGEMENT OF DEFAULT - SECOND / FIRST

ALL PUBLIC SERVANTS, OFFICERS, EMPLOYEES, PERSONNEL IN SERVICE, HEREIN AND
THROUGHOUT HAVE SILENTLY AGREED/CONSENTED WITH My/Our COMMERCIAL AFFIDAVITS
OF TRUTH(C.A.T.) REVEALING THAT SUCH SERVANTS DO NOT HAVE ANY VENUE AND
JURISDICTION OVER Me/Us (The Creators of Government); AND THIS, "EX PARTE
DEMAND FOR ORDER RESTORING OF POSSESSION OF PROPERTY, FOR STAY OF EXECUTION
TEMPORARY RESTRAINING ORDER, PRELIMINARY AND PERMANENT INJUNCTIONS, AND
DAMAGES".

ALL U.S. CODES IS/ARE APPLICABLE TO ANY/ALL PUBLIC SERVANTS; 12 USC 95a,b,
15 USC 17, 18 USC 4, 5, 247, 241, 242, 336, 891-894, 914, 1341, 1501, 1506,
1512, 1651-1661, 1701, 1961-1962, 2381-2390, 31 USC 3701 now at 3124, 42
USC 1989-1995 @ 1994, 50 USC 501-593, but not limited to, et al.
AND ALL U.S. Statutes at Large; 3 Stat. 252, 8 Stat. 572, 9 Stat. 869,
9 Stat. 922, 9 Stat. 462, et al.

IN THIS ORDER AND DEMAND FOR THE COURT(S): THE ETERNAL SECURITY FOR THE
SUBSTANTIAL COMPLETION FOR THE REGISTERED SECURITY ACCOUNT # 439141362-
01011130-8954BCY-ADVO1799-283958645, FOR THE CAUSES OF NECESSITIES FOR THE
LAST CLEAR CHANCE DOCTRINE, CIVIL FORFEITURES FOR CRIMINALS FROM JUSTICE.

ORDER

Based on the evidence and facts, expressed and/or implied-in-fact presented
in Exhibit(s) File #5325060, book 03555, pages 2290-2236, and exhibits "A" through "U"
at LEE COUNTY FLORIDA RECORDS CLERK OF CIRCUIT COURT, DATE 1/09/2002, ET AL.

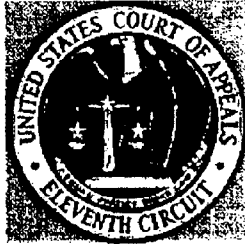
and made a definite part thereof in its/their entirety.

United States Court of Appeals

This site looks best at 1024x768 resolution. For optimum viewing, please adjust your screen resolution.
Thanks!
[Site Map] [FAQ's] [Webmaster]

Eleventh Circuit

Most Requested Links



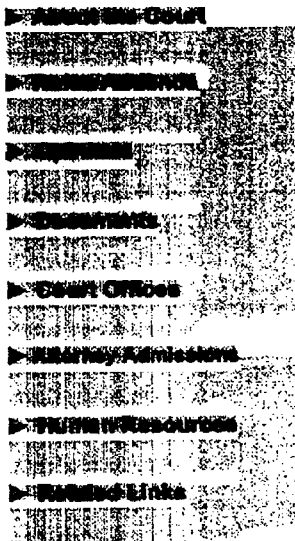
Clerk's Office

The Clerk's Office is open from 8:30am to 5:00pm, Monday through Friday, and is closed on all Federal Holidays.
For information regarding a *specific* appeal please refer to the Clerk's Office Directory and contact the appropriate docket clerk handling the appeal.

For general information, you may call the Clerk's Office main phone number at (404) 335-6100.

The 11th Circuit Rules and IOP's, and clerk's office forms, are available in ".pdf" format in our Rules and Documents sections.

Clerk's Office Mailing Address:
Thomas K. Kahn, Clerk
U.S. Court of Appeals for the 11th Circuit
56 Forsyth St. N.W.
Atlanta, Georgia 30303



- Other Court Offices
- Home Page
- Circuit Executives Office
- Kinnard Mediation Center
- Staff Attorneys Office
- Eleventh Circuit Library
- Links with Related Information
- Clerk's Office Directory
- Fee Schedule
- Where to Send Case Filings
- Attorney Admissions
- Filing Rules and Information
- Filing Briefs (Color/Quantity/Time)
- Filing Briefs (Format)
- Record Exerpts (Format/Color/Quantity)
- Petitions for Rehearing and for Rehearing En Banc (Color/Quantity/Time Summary)
- Positions Available (Human Resources)

SCANNER'S MEMO
Best Image Available

OR BK 03600 PG 4322

FEDERAL REGIONAL OFFICES—UNITED STATES FEDERAL COURTS

(UNITED STATES DISTRICT COURT OF WYOMING Cont'd)

Chief District Judge .. 307-772-2104
2120 Capitol Ave / Cheyenne, WY 82001
District Judge 307-772-2463
PO Box 985 / Cheyenne, WY 82003-0985

UNITED STATES BANKRUPTCY COURT FOR THE DISTRICT OF WYOMING

URL (Internet) address: <http://www.wyb.uscourts.gov>

2120 Capitol Avenue / Cheyenne, WY 82001

Fax: 307-772-2109

Bankruptcy Judge ... 307-772-2144
PO Box 763 / Cheyenne, WY 82003-0763
Bankruptcy Clerk 307-772-2191
PO Box 1107 / Cheyenne, WY 82003

UNITED STATES COURT OF APPEALS FOR THE ELEVENTH CIRCUIT

URL (Internet) address: <http://www.ca11.uscourts.gov>

✓ 56 Forsyth Street, NW / Atlanta, GA 30303

States Served: AL, FL, GA

Circuit Justice 202-479-3000
1 First St, NE / Washington, DC 20543-0001

✓ Chief Circuit Judge .. 912-752-8101
PO Box 977 / Macon, GA 31202-0977
Circuit Judge 404-335-6550
56 Forsyth St NW / Atlanta, GA 30303-2205

Circuit Judge 305-536-7335
89 NE 4th St, Ste 1223 / Miami, FL 33132-2131

Circuit Judge 404-335-6333
56 Forsyth St NW / Atlanta, GA 30303-2205

Circuit Judge 904-232-2496
PO Box 53135 / Jacksonville, FL 32201-3135

Circuit Judge 334-223-7132
15 Lee St, Rm 410 / Montgomery, AL 36104

Circuit Judge 334-690-2055
113 St Joseph St, Rm 433 / Mobile, AL 36602-3624

Circuit Judge 334-223-7126
PO Box 867 / Montgomery, AL 36101-0867

Circuit Judge 404-335-6230
56 Forsyth St NW / Atlanta, GA 30303-2205

Circuit Judge 305-536-4841
99 NE 4th St, Rm 1262 / Miami, FL 33132

Circuit Judge 904-232-3416
PO Box 960 / Jacksonville, FL 32201-0960

Circuit Judge 813-301-5650
801 N Florida Ave, 14th Fl / Tampa, FL 33602

Senior Circuit Judge .. 404-331-5221
56 Forsyth St NW / Atlanta, GA 30303-2205

Senior Circuit Judge .. 305-536-5974
89 NE 4th St, Rm 1255 / Miami, FL 33132

Senior Circuit Judge .. 334-223-7210
PO Box 1589 / Montgomery, AL 36102-1589

(A)

(UNITED STATES COURT OF APPEALS FOR THE ELEVENTH CIRCUIT Cont'd)

Senior Circuit Judge .. 904-232-2284
PO Box 52598 / Jacksonville, FL 32201
56 Forsyth St NW / Atlanta, GA 30303-2205

Senior Circuit Judge .. 404-335-6300
Senior Circuit Judge .. 404-335-6110
Senior Circuit Judge .. 913-893-3296
144 First Ave, S / St Petersburg, FL 33701-4311
Circuit Executive 404-335-6535
Circuit Clerk 404-335-6100

UNITED STATES DISTRICT COURT OF ALABAMA

MIDDLE DISTRICT

URL (Internet) address: <http://www.almd.uscourts.gov>

Post Office Box 711 / Montgomery, AL 36101

Location: 15 Lee Street / Montgomery, AL 36104
Fax: 334-223-7114
(Eleventh Circuit)

Chief District Judge .. 334-223-7802
PO Box 629 / Montgomery, AL 36101-0235

District Judge 334-223-7312
PO Box 629 / Montgomery, AL 36101-0629

District Judge 334-223-7655
PO Box 2149 / Montgomery, AL 36102-2149

Senior District Judge .. 334-223-7321
PO Box 2048 / Montgomery, AL 36103-2048

Senior District Judge .. 334-223-7128
15 Lee St / Montgomery, AL 36104

District Clerk 334-223-7308
PO Box 711 / Montgomery, AL 36101-0711

Chief Pretrial Services Ofcr 334-206-6399
PO Box 690 / Montgomery, AL 36101-0590

Chief Probation Ofcr .. 334-223-7301
PO Box 89 / Montgomery, AL 36101-0039

Federal Defenders Organization 334-834-2099
201 Monroe St, Ste 1980 / Montgomery, AL 36104

Equal Justice Initiative Exec 334-269-1803
114 N Hull St / Montgomery, AL 36104-3796

Chief Magistrate Judge 334-223-7540
PO Box 430 / Montgomery, AL 36101-0430

Magistrate Judge 334-223-7316
PO Box 158 / Montgomery, AL 36101-0158

Magistrate Judge 334-223-7061
PO Box 1629 / Montgomery, AL 36101-1629

Magistrate Judge 334-223-7043
PO Box 180 / Montgomery, AL 36101-0711

NORTHERN DISTRICT

URL (Internet) address: <http://www.alnd.uscourts.gov>

1729 5th Avenue North / Birmingham, AL 35203

Chief District Judge ... 205-278-1850

(B)

(NORTHERN DISTRICT Cont'd)

Senior District Judge .. 205-278-1880
District Judge 205-278-1810
District Judge 205-278-1820
Senior District Judge .. 205-278-1830
Senior District Judge .. 205-278-1840
Senior District Judge .. 205-278-1700

Senior District Judge .. 205-278-1800
Senior District Judge .. 205-236-4170
District Clerk 205-278-1700
Chief Probation Ofcr .. 205-278-2100

Chief Magistrate Judge 205-278-1900

Magistrate Judge 205-278-1910

Magistrate Judge 256-639-7705
101 Holmes Avenue / Huntsville, AL 35801

Magistrate Judge 256-278-1930

Magistrate Judge 205-278-1920

SOUTHERN DISTRICT

URL (Internet) address: <http://www.alisd.uscourts.gov>

113 St Joseph St / Mobile, AL 36602

District Judge 334-694-4545

Senior District Judge .. 334-690-2381

PO Box 485 / Mobile, AL 36601-0485

Senior District Judge .. 334-690-2821

Senior District Judge .. 334-690-2816

District Clerk 334-690-2944

Chief Pretrial Svcs Ofcr 334-441-5500

PO Box 2925 / Mobile, AL 36652-2925

Chief Probation Ofcr .. 334-441-6800

PO Box 2985 / Mobile, AL 36652-2985

Community Defender Org 334-433-0910

2 S Water St, 2nd Fl / Mobile, AL 36602

Magistrate Judge 334-690-2345

Magistrate Judge 334-690-3202

Magistrate Judge 334-690-3239

Chief District Judge .. 334-690-2175

District Judge 334-690-3133

UNITED STATES BANKRUPTCY COURT FOR THE MIDDLE DISTRICT OF ALABAMA

URL (Internet) address: <http://www.almb.uscourts.gov>

Post Office Box 1248 / Montgomery, AL 36102-1248

Location: One Court Square / Montgomery, AL
Fax: 234-206-6374

Chief Bankruptcy Judge 334-206-6357
PO Box 35 / Montgomery, AL 36192-0035

Bankruptcy Judge 334-206-6357
PO Box 1248 / Montgomery, AL 36192-1248

Bankruptcy Judge 334-223-6356
PO Box 35 / Montgomery, AL 36192-1248
fax: 334-223-6308

Bankruptcy Clerk 334-208-6300
PO Box 1248 / Montgomery, AL 36192-1248

(C)

UNITED STATES BANKRUPTCY COURT FOR THE NORTHERN DISTRICT OF ALABAMA

URL (Internet) address: <http://www.alnb.uscourts.gov>

1800 Fifth Avenue North / Birmingham, AL 35203

Fax: 205-714-4005

1800 5th Ave North / Birmingham, AL 35203

Chief Bankruptcy Judge 205-714-3850

Bankruptcy Judge 205-731-3880

Bankruptcy Judge 256-953-2617

PO Box 1289 / Decatur, AL 35602-1289

Bankruptcy Judge 205-731-3665

Bankruptcy Judge 256-237-3528

1129 Noble St / Anniston, AL 36201

Bankruptcy Judge 205-752-0426

PO Box 3226 / Tuscaloosa, AL 35403-3226

Bankruptcy Administrator 205-714-3826

Bankruptcy Clerk 205-714-4001

UNITED STATES BANKRUPTCY COURT FOR THE SOUTHERN DISTRICT OF ALABAMA

URL (Internet) address: <http://alnb.uscourts.gov>

201 St Louis Street / Mobile, AL 36602

Chief Bankruptcy Judge 334-441-5628

Bankruptcy Judge 334-441-5625

Bankruptcy Clerk 334-441-5391

extension: 103

e-mail address: lester@alb.uscourts.gov

UNITED STATES DISTRICT COURT OF GEORGIA

(Eleventh Circuit)

MIDDLE DISTRICT

URL (Internet) address: <http://www.gamd.uscourts.gov>

PO Box 128 / Macon, GA 31201

Location: 475 Mulberry Street / Macon, GA 31201

Fax: 912-752-3496

Chief District Judge .. 478-752-3500

PO Box 1014 / Macon, GA 31202

District Judge 706-324-4118

PO Box 2017 / Columbus, GA 31902

District Judge 475-752-3591

Post Office Box 838 / Macon, GA 31202

fax: 475-752-8164

District Judge 229-430-8553

PO Box 1705 / Albany, GA 31702-1705

Senior District Judge .. 912-752-3491

PO Box 65 / Macon, GA 31202

District Clerk 478-752-3497

PO Box 128 / Macon, GA 31202

Chief Probation Ofcr .. 478-752-8106

PO Box 1736 / Macon, GA 31202-1736

Magistrate Judge 912-752-8125

PO Box 48 / Macon, GA 31202

Magistrate Judge 229-430-8577

PO Box 87 / Albany, GA 31702-0087

Magistrate Judge 706-649-7860

PO Box 117 / Columbus, GA 31902

(D)

IT IS HEREBY ORDERED THAT:

DIMISSAL AND NULLIFICATION OF ANY/ALL PROCEEDINGS IN THIS/THESE ISSUE(S) AND ORDER TO CEASE AND DESIST IN ACTIVITIES IN THIS AND ALL RELATED MATTERS: AND INVESTIGATE, PROSECUTE AND INCARCERATE WHERE REQUIRED ALL GOVERNMENT OFFICERS AND EMPLOYEES, ET AL. WITH SANCTIONS APPLIED AGAINST RESPONSIBLE PUBLIC EMPLOYEES, ET AL. AND RETURN CHRISTIAN-ACCUSED TO ORIGINAL POSITION-STATUS QUO (AB INITO) AND TO AFFIX SANCTIONS APPLICABLE TO THE PUBLIC SERVANTS FORTHWITH, FOR LACK OF VENUE AND JURISDICTION AND INCOMPETENT ATTORNEYS, ET AL.

I/We hold these truths/facts to be self-evident and that the facts/evidence that has/have been recorded, presented, mentioned above, and herein and throughout this 4 page C.A.T. is/are true, correct, complete, certain and not misleading to the best of my/our knowledge, so help me/us Almighty God, Ex. 7:4,22:1-26, Lev. 25:23, Deut. 25:13-16, Isa. 9:6, Matt. 5:33-37, Luke 2:49, Titus 1:10-16, but not limited to...Caveat Emptus.

Ordered for the court(s) an executed on March 15, 2002 in the year of my/our Lord Jesus Christ, Isaiah 9:6.

x Michael-Dennis Grady
The honorable plenipotentiary for JCA/PSASL; Michael-Dennis:Grady, et al.

x Vernon Jay Schaefer
Witness/Juror, et al.

[Signature]
Witness/Juror, et al.

John James; Crowen
Witness/Juror, et al.

x Homer Slover Jr
Notary Public (signature)

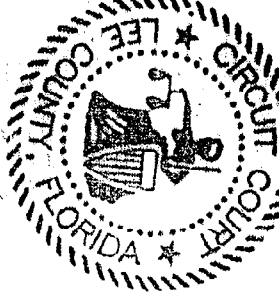
x HOMER SLOVER, JR.
printed name

NOTARY PUBLIC - STATE OF FLORIDA
HOMER SLOVER, JR.
COMMISSION # CC806436
EXPIRES 4/28/2003
BONDED THRU ASA 1-888-NOTARY!

x notary seal/stamp

I am a Notary Public in the State of Florida, and my commission expires: April 28, 2003 A.D. The foregoing instrument/ 4 page C.A.T. was acknowledged before me on March 15, 2002 by Michael-Dennis:Grady who is personally known to me, and who Did/ Did Not take an Oath, so help me/us Almighty God, Isaiah 9:6.

Attached: Pages two(2) and three(3) is/are verification of PUBLIC SERVANT AND D/B/A ADDRESS, ET AL.



I CERTIFY THIS DOCUMENT TO BE A TRUE AND CORRECT COPY OF THE ORIGINAL ON FILE IN MY OFFICE CHARLIE GREEN, CLERK CIRCUIT COURT LEE COUNTY, FLORIDA

DATED: July 24, 2003
[Signature]
Deputy Clerk

In Re: CHARLIE GREEN, CLERK OF COURTS, ET AL., ALL
SHAREHOLDERS OF THE FEDERAL RESERVE NOTE DOLLAR
SYSTEM, ET AL., ALL DEPUTY CLERKS, ET AL.

STYLE: TO CORRECT, Puget's Sound Agricultural Company,
JCA/PSASL vs. GALE A. NORTON, ET AL., ALL SHARE-
HOLDERS, ALL INTERLOCKING DIRECTORATES, ALL INTER-
LOCKING EQUITY TIES, pursuant to any/all files
including: #5740645·#3867·#1308-#1379, and any/all
future acts, et al.

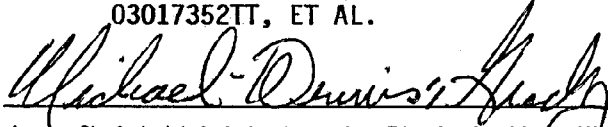
02032944TT, ET AL.

02032948TT, ET AL.

02032950TT, ET AL.

02081825TT, ET AL.

03017352TT, ET AL.

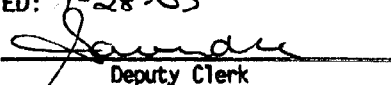


Jesus Christ Administrator, for Plenipotentiary Michael-Dennis:Grady,
member Puget's Sound Agricultural Company, JCA/PSASL-1020, for Lee
county, for Florida state, for the united states of America, of the
State of Florida, ET AL.

I CERTIFY THIS DOCUMENT TO BE A
TRUE AND CORRECT COPY OF THE
ORIGINAL ON FILE IN MY OFFICE,
CHARLIE GREEN CLERK COUNTY COURT
LEE COUNTY, FLORIDA.

DATED: 7-28-03

BY:


Deputy Clerk